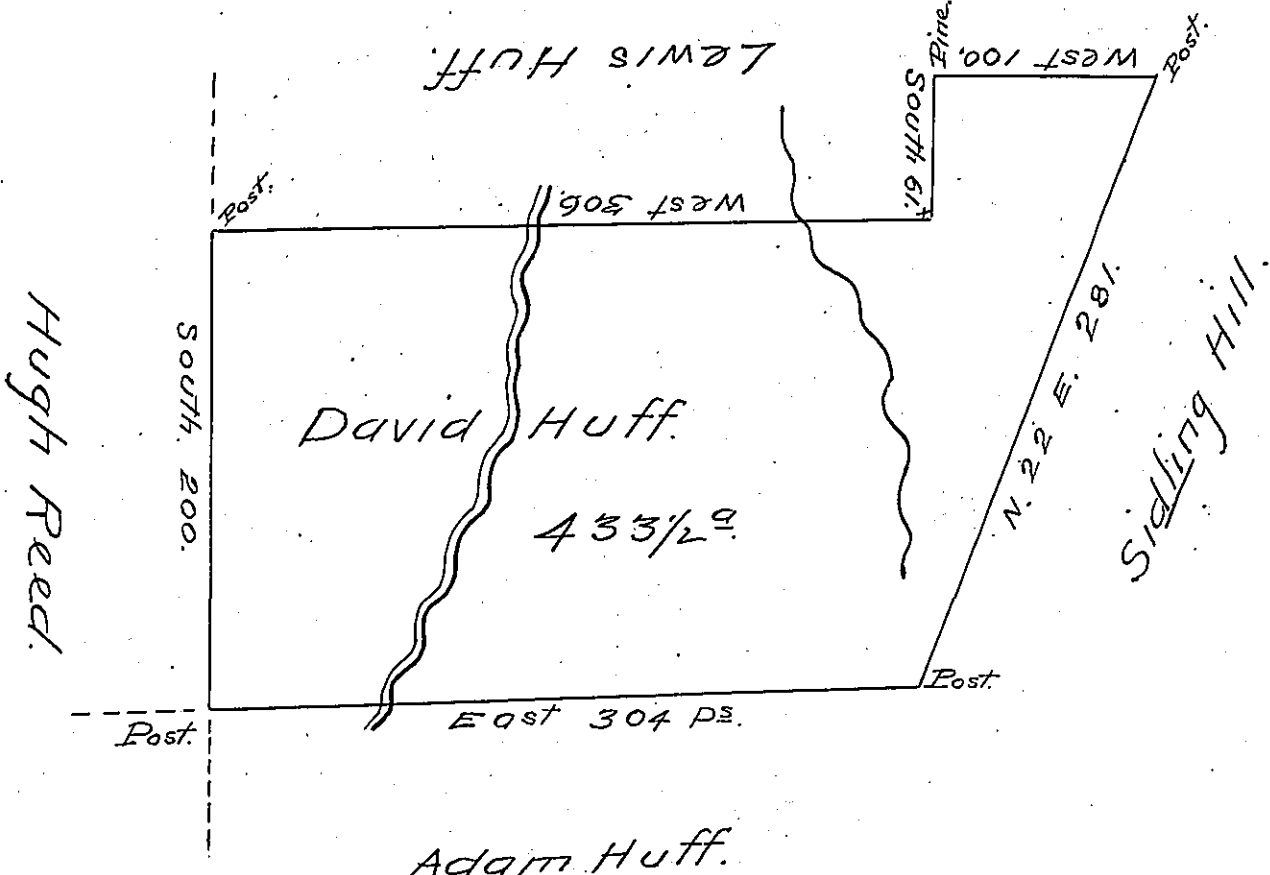


C-90-157



Adam Huff.

pg. 70

Situate on the waters of Tomollaway Creek in Bethel Township, Bedford County Containing 433 1/2 acres with the usual allowance of Six per Cent for Roads &c. Surveyed for David Huff the 27<sup>th</sup> day of October 1794 on Warrant dated the 21<sup>st</sup> day of February 1794

By George Woods D.S.

Examined by me December 15<sup>th</sup> 1808

To Samuel Cochran Esq

John Anderson

Surveyor General.

Deputy Surveyor

IN TESTIMONY that the above is a copy of the original remaining on file in the Department of Internal Affairs of Pennsylvania, made conformably to an Act of Assembly approved the 16th day of February, 1833, I have hereunto set my Hand and caused the Seal of said Department to be affixed at Harrisburg, this twenty eighth day of March 1905.

*Isaac R. Perry*  
 Secretary of Internal Affairs.